



DIARY DATES

Mon 23 July 7.30pm

Transition: Local Food talk (see p5)

Tues 31 July 5pm

Café get-together (see p2)

Tues 7 August 7.30pm

HFoE meeting. Recycling Unlimited
151 Newland Avenue

Sat 11 August 2pm

Bee Walk (see p2)

Sunday 19 August

Skyride - Hull (see p7)

Tues 4 September 7.30pm

HFoE meeting. Recycling Unlimited
151 Newland Avenue.

Fri 28 & Sat 29 September

Cornucopia Festival (see p4)

Tues 2 October 7.30pm

HFoE meeting. Recycling Unlimited
151 Newland Avenue

In this issue

Diary Dates	1
A Green Vision for Hull	1
ECO Chit Chat	2
CPRE Transport report	2
On the trail of our blue bins	3
Pockets of sanity at biodynamic farm	4
Cornucopia: music & green festival	4
Beverley FoE meetings	4
Transition news	5
Is this deal for real? The new Green Deal	5
Wildlife Notes	6
Weather & wildlife reports	6
Dr Eva Crane: international bee expert	7
Monsanto buys out bee study firm	7
Skyride in Hull	7
Membership form & contact info	8

Hull's green vision

IN OCTOBER 2011, HULL'S GREEN CITY GROUP MET FOR THE FIRST TIME WITH THE AIM OF DEVELOPING A GREEN VISION FOR HULL. DEVELOPED ON THE BACK OF THE SIEMENS PROJECT (AT THE TIME STILL AWAITING A DECISION) THE INTENTION WAS TO ROLL OUT A FULL SCALE PLAN TO MAKE HULL NOT ONLY A PIONEERING RENEWABLES BASE BUT A LEADING GREEN CITY.

To achieve input from all sectors, World Café style events were planned across the city. In February, four main consultations were held and members of the public sector, schools, business, community and voluntary organisations were gathered in different areas of the city.

A creative method of ideas gathering (Appreciative Enquiry Technique) was used to draw positive and innovative responses using bold questions: 'What does Hull do well / what can we build on?', 'What would Hull as a green city look like?', and ideas for small and radical steps that could be taken to get us there.

In March, the key points made were drawn together and an attempt was made to finalise the vision by inviting all the attendees to a Guildhall Summit.

A real buzz was tangible, and the mix of businesses and voluntary organisations was productive. The main focus of the consultations was to provide a 'key aspirational vision' with 4 strategic objectives to deliver 'outcomes around improving employment, health and anti-poverty measures' in order to make a difference for the people and the businesses in Hull. **Most-wanted outcomes were more employment for Hull people, sustainable living and healthier lifestyles.**

The 4 strategic objectives or ambitions for Hull are to be:

1. UK renewable energy capital
2. National centre for green learning and skills
3. Leading low carbon sustainable economy.

4. Renowned for practical action that changes lives.

As a complement to the formal reports, hand-drawn boards were created during the summit illustrating the main elements ie all the ideas mentioned that were key to becoming a green city—sustainable transport, food and waste systems, renewable energy and efficient buildings etc and what we do well.

"In Hull, Green is more than a colour" was voted best strapline.

The Green City Group Expo was held in the Guildhall on 14 June. This turned out to be a gem of an event but sadly under-attended. Councillor Mancey spoke about the Vision and many other excellent speakers from 'green' local businesses and not-for-profits were enjoyed by the small audience.

Lee-Ann Williams

Links: Search Hull City Council website www.hullcc.gov.uk for Green Vision/Green City Group and Partnership News



HAVE YOU EVER WONDERED WHAT HAPPENS TO THE STUFF IN YOUR BLUE BIN? WONDER NO MORE! PAGE 3 TELLS ALL...

eco CHIT CHAT

Green Fair

If we are to have a Hull FoE Green Fair this year, we will need people willing to organise the kitchen. Any offers? Or should we do something different this year? If so, we will need you to help make it happen. Your thoughts and offers please to Hilary or Sue (see back page for contact details).

Gazebo to share

Hull FoE now have a new easy to put up Gazebo for stalls at events. We are happy to share space with other 'green' organisations. It worked well at VISTA and Avenues Open Gardens.

Congratulations to Shan and Bill

who managed a stage of the Great British Bike Ride in May in aid of Friends of the Earth, and to the Beverley FoE members who raised funds and helped them.

We are surely due for a late summer to enjoy:

- ▶ **Hull Folk and Maritime Festival** on Friday 17th and Saturday 18th August in and around Humber Street and Holy Trinity. Music, songs, dance, boats, real ale, art, crafts, treasure hunts, fish, and Ralph McTell. www.hullfolkfestival.com
- ▶ **Heritage Open Days** on Thursday 6th to Sunday 9th September. Behind the scenes viewings of buildings, guided tours, crafts, talks, displays. www.hodshull.co.uk



Council for the Protection of Rural England

Transport update

- ▶ **Foot Transport:** Work on the ERYC Rights of Way Improvement Plan continues. Two large footpath diversions are likely, due to the requirement to build and ship off-shore wind turbines from the Humber. One will go round Alexandra Dock. The other is to return to the Humber a large area of farmland, at Cherry Cobb Sands.
- ▶ **Pedal Power:** Our various Cycle Network routes are being well-used, encouraging Green Tourism. We now have the *Yorkshire Wolds Cycle Route*, and the very popular *Way of the Roses* (Morecambe to Bridlington). Pocklington has produced its own cycle map, covering six circular routes.
- ▶ **Public Transport:** To replace the defunct Guide, the ERYC is to produce a Public Transport Map, which should, in Summer 2012, be available electronically. The Minsters Rail Campaign (Beverley to York Railway reinstatement) has an interesting new website: www.minstersrail.net
- ▶ **Roads:** Work to be undertaken on the A164 (Humber Bridge to Beverley) will include off-road pedestrian and cycle ways; we have been involved in the planning.
- ▶ **Water Transport:** With the aim of making best use of the area's inland waterways, the ERYC/KuHCC Joint Local Access Forum has become a user group of the East Riding and North Yorkshire Waterways Partnership.

Brian Witty

It's Climate Change—official

So says Chris Smith, Chairman of the Environment Agency: "The weather extremes which we've seen this year—with widespread floods almost immediately following a long term drought—have brought the importance of resilience into sharp focus. Climate change science tells us that these are the sort of weather patterns we are going to have to get used to, so taking action today to prepare and adapt our homes, businesses, and infrastructure is vital".

Environment Agency Press Release 11 July 2012

Bread café is good news

Lee-Ann and I enjoyed a lunch at Bread, a new café in Wright Street (where Good News Bookshop used to be). It specialises in local seasonal produce (some grown in their courtyard behind the café) and fairtrade. They are especially interested in buying surplus produce from local small growers. When established, the café will help to support City Life Church's work with homeless people and people with drug problems.

Hull Foodbank

has helped over 700 people in the last year with food donated by businesses and individuals outside supermarkets. 60,000 people live below the poverty line in Hull. Often it is the late arrival of benefits that forces people into desperate need. General enquiries T 01482328196 admin@hullfoodbank.org

Cafe Get Together

Tuesday 31 July, 5pm to 7pm at **Potters** on Chanterlands Avenue. Level access. Tea, scones, cake, conversation, nice garden if the sun shines!

All welcome!

Bee Walk

Saturday 11 August, 2pm-3pm. Pearson Park. Meet at the Wildlife Garden. What makes a good environment for bees? Compare the good with the not so good. Lead by David

Hull FoE membership NEW RULES

Thanks to everyone who paid their subs this year. Last year a lot of people forgot to pay, unfortunately, so we agreed to introduce a new rule to encourage people to be prompt.

SUBS ARE NOW DUE BY 1 APRIL EACH YEAR

If you have paid your subscription, you are a full member and will be covered by FoE insurance at our events and also entitled to vote at the AGM and other meetings. **Anyone who misses a full calendar year will cease to be a member.**

If you already have a standing order (for any month) that's great and no change is necessary. Setting up a standing order is a good way to pay without having to remember every year (and saves us admin work!)

THESE RULES WILL APPLY FROM 2013

Thanks for your cooperation. We haven't raised the cost of the subscription for years and years and it's a very small amount!

Newsletter by email If you would like to receive the newsletter as a full colour pdf attachment, please send your email address to sue@jolliffe.karoo.co.uk stating whether you would like to receive it instead of or as well as a paper copy

On the trail of our Blue Bins

Have you ever wondered what happens to the stuff which (if you live in Hull) you put for recycling in your blue bin?

Well, Hull FoE members wondered too. Which is why a rainy day in April saw five of us heading down to Aldridge near Wallsall, with Hull City Council's Waste Manager Paul Thomas driving the minibus.

of chance to move to different tasks. As one of the machines broke down while we were there, we had chance to see the stringent safety procedures that make sure no one is in danger when the machines are switched back on.

Roughly 50% of the waste by volume is paper, 30% glass, 27% plastic, 2% steel and 1% aluminium.

Paper is removed by rotating blades and blowers. Steel and aluminium cans, glass and plastic are then separated to take different routes. An optical detector separates the white and clear plastic from the coloured.

The resulting bails of plastic still looked fairly mixed to me, but I was assured that

the separation meets the requirements of their customers, which include manufacturers of milk bottles for Marks and Spencer. We also saw the piles of glass cullet, different sized granules for different customers.

A long question and answer session afterwards answered

most of what we wanted to know, though I was promised a flow diagram which we didn't receive.

What happens to the resulting materials?

Well, much of it goes to China, we were told, because that's where most manufacturing is done these days. And much of it goes back into packaging, though the number of products made from recycled material is growing.

Personally, I'm still uneasy about the amount of travelling that the materials do, and would like the Council to consider using firms with facilities nearer Hull when the contract comes up for renewal. East Riding's material travels nearly as far, to North Wales, and there is surely some scope for combining efforts? There are nearer facilities, as we know from a visit we did a few years ago to a firm in Lincolnshire.

A great deal more could be done to find new uses, nearer to home, for recycled materials.



The waste arrives

'Why do we need to go so far?' was one of the first questions we asked. Well WRG, which has the contract for handling Hull waste until 2014, subcontracts to BIFFA. They have only 3 recycling centres, in London, Manchester and Wallsall, and it's the Wallsall one that handles domestic waste. So 20,000 tons of recyclables (approximately 1000 trucks) head down the road every year from Hull. They tend to travel at night; the plant operates 24 hours a day.

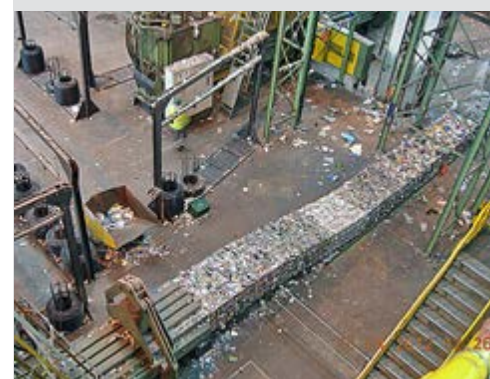
First stop was a vast hall in which the mixed waste from all over the country is tipped and weighed. Thick cardboard boxes are removed for separate recycling with commercial waste (thinner card such as cereal boxes etc count as paper) and then the waste is conveyed to be hand picked to remove the unrecyclables (these include plastic film and rigid plastic) and textiles. Only 2% of the waste goes to landfill. Though much of the process is automated and computer controlled, there is still the need for hand picking. We are told the 30 people employed on site get plenty



Hand sorting



Paper separation



Bales of white and coloured plastics coming off the baling machine



Bales of steel cans

continued on page 5

PHOTOS: Hilary Byers

Pockets of sanity

An inspiring discovery on our trip to Clervaux biodynamic farm



Horticulture (above) and a building made from straw bales and lime render (below)



On 1 May Hull Friends of the Earth visited an open day at a biodynamic farm at Clow Beck, Croft on Tees in North Yorkshire. Clervaux is 100 acres dedicated to growing crops, animal husbandry and rural crafts. Run by the Clervaux Trust, it is a pioneering project aimed at connecting people to the earth.



A student demonstrates wood-turning on a pole lathe

Biodynamic is similar to organic farming in that it eschews pesticides and intensive livestock rearing, but goes one step further in that it sees the whole farm as one organism. This is not so different from the traditional mixed farm where manure from the livestock enriches the ground for the crops, but biodynamics emphasises working with life forces and has a strong spiritual and holistic focus.

Some of the more peculiar aspects of biodynamic farming techniques certainly charm the imagination—astronomical data is used to plant by, and strange concoctions such as manure in horns is used. However, it has impressive results in the size and quality of the crops.

Any scepticism we might have had was offset by a very inspiring discussion with Tyll van der Voort who leads much of the work at Clervaux. His talk of the need to see ourselves as part of the earth as an integrated organism, for us to have a healthy engagement with nature, creating “pockets of sanity” in the world, and the need to move beyond oil-based food production, certainly resonated with all of us.

Particularly impressive is the Clervaux Trust’s educational work with young people who have special needs or are disaffected from school. Many are referred by Social Services. The Trust teaches on Steiner lines engaging “hands, head and heart” with an emphasis on practical activities, arts and crafts. These include blacksmithing, catering, bakery,

horticulture, pottery, weaving, green woodwork, animal care and construction. We were able to see demonstrations of some of the crafts. Employing a total of 60 staff, most part-time, for 20 students, they are able to engage many youngsters who have been excluded from other schools. In addition they have a number of younger children on work experience. There are 2 houses giving accommodation for 10 residents; many of these are adults with learning difficulties but the aim is to create a more balanced community.

After watching a presentation to the landowner of the annual “rent” of a loaf of bread, we visited the cafe run by the Trust in nearby Darlington to sample delicious food from the farm and bakery.

Lee-Ann Williams and Hilary Byers

PHOTOS: Hilary Byers

Festival and Green Fair in a rural setting

Cornucopia Music Festival & Green Fair

Friday 28th and Saturday 29th September at Low Farm, Beswick near Drifffield, East Riding of Yorkshire, YO25 9AX

Good music in a lovely setting; local seasonal food and drink, camping, activities for adults and children; everything from beekeepers to welly wanging, drumming to poetry, papier mâché sculpture making to pedal power racing.

Weekend £35 (concessions for under 16 £15);

Day £20 (concessions £10)

Shuttle bus will run from Hutton Cranswick railway station. Parking on site.

www.cornucopiafestival.co.uk

www.facebook.com/CornucopiaFestival

TICKETS FROM www.wegotickets.com

email: cornucopia2012@hotmail.com

Beverley FoE

meet 3rd Thursday each month at Nellies’ pub, Beverley, 7.30pm.

Green Drinks: informal discussions every 13th of each month at the Green Dragon Pub, Saturday Market Place, Beverley. All welcome.

Transition news

The next Transition Hull meeting, Mon 23 July 2012 at the Quaker Meeting House on Bean Street, off Anlaby Road, HU3 2PR at 7.30, will feature a talk and discussion about local food.

This meeting will include information on **Food Webs and Mapping**—website at <http://www.makinglocalfoodwork.co.uk/about/fwm/index.cfm>

Lausanne attended a conference in Leeds called "Local Towns, Local Food—Strengthening Local Economies" in June (see below) and will be reporting back. The conference was organised by CPRE (Campaign for the Protection of Rural England) which supports the research on the value of local food webs. See <http://www.cpre.org.uk/what-we-do>

A map for the venue for this meeting is at <http://www.hullquakers.org.uk/page3.htm>

PLEASE NOTE THAT FROM AUGUST WE WILL BE MEETING ONCE A MONTH, ON THE 2ND MONDAY OF THE MONTH. I WILL CIRCULATE INFORMATION ABOUT THE NEW VENUE WHEN IT IS ARRANGED.

Local food chain benefits quality of life

Through our involvement with the Thornton Fresh Food Coop, our Co-ordinator attended a conference in Leeds entitled *Local Towns, Local Food* in June. She says:

- ▶ This was an extremely interesting conference which showed how a thriving local food chain can benefit the quality of life, landscape and prosperity of an area. Supermarket expansion is a huge threat to local food economies and independent retailing, with centralised supply chains strangling the local shop.
- ▶ Previous research in East Sussex concluded that we need to identify food webs in other areas, as well as the 19 that have already been mapped. So far in Yorkshire the only areas covered are Otley and Sheffield. A high proportion of the 19 were Transition towns.
- ▶ I left the Conference feeling inspired with the hope that Hull will soon have its own local food web!

Film programme

Our spring programme of films included *The Economics of Happiness, I wish I went*

to Ecuador, Growing Green, The man who planted trees, Gasland, and H2Oil. Some of these are available to borrow (contact 845356). We're planning a further autumn film programme, to include *In Transition 2.0*, about the successes of a range of transition initiatives elsewhere in the country and abroad.

Constable Street Garden

2012 is the second growing season at our developing community garden on the Constable Street School field. We're also starting to develop a wild flower area in another corner of the field. We need volunteers with a variety of skills, eg DIY and sign-making as well as gardening. Please contact 07816 141169 if you can offer to help.

We are still running regular sessions, but the weather is proving difficult, so please contact Lausanne (07816 141169) about when the next session is scheduled.

Green Vision

Transition Hull took part in the *Green Vision* sessions organised by Hull City Council, and we look forward to seeing some of the ideas implemented. It would be good to see an expansion in allotment provision.

City farms

We continue to work with other local groups which have overlapping interests, and under the umbrella of the Federation of City Farms and Community Gardens we are hoping to hold regular get-together meetings, like the event at Densholme Farm in April (see www.transitionhull.co.uk).

Funding for community gardens

We've been fortunate in obtaining further funding in 2012, receiving a grant from Playscape funds to support the community garden, and an award from the Tudor Trust for specific development, such as water collection, fruit bushes and wildflower area. Two of us are attending a workshop in July at the National Communities Resource Centre at Trafford Hall to swap experiences on community garden projects.

Membership

Transition Hull and Hull Friends of the Earth had a joint stall at the Vista Festival in June and we got more than a dozen new members signing up to the Transition Hull mailing list.

If you are not on the mailing list and want to join, email jenny@transitionhull.co.uk

Jenny Parsons

Is this deal for real?

The **Green Deal**, announced by Greg Barker, Climate Change Minister, as "the biggest home improvement programme since the Second World War" is due to come into effect in October 2012.

It provides funding for retrofitting energy efficient products to domestic or commercial properties. Property owners will not pay any up front costs, but instead will pay through their energy bills over the lifetime of the products. Businesses will provide the money, being paid back through the energy bills.

A "Golden Rule" will ensure that the property owner never pays more than they would have done if the improvements had not been made. The liability for the debt lies with the property and not the individual.

The scale is massive: the Government expects capital investment of up to £15 billion in the residential sector alone by the end of the decade, with the Green Deal supporting up to a peak of 250,000 jobs. This commitment to the existing housing stock as part of combating climate change is, arguably, long overdue; it has very wide-ranging support in principle.

But construction professionals are warning that the assessors and installers are not genuinely independent and are likely to have vested interests in pushing particular products, whether or not they are suitable for the particular building.

Hilary Byers

Source: Institute of Historic Building Conservation

On the trail of our Blue Bins *continued from page 3*

I also feel that if we did more sorting at source, particularly by separating out the paper, the resulting recycled products would be of a higher quality. However, we have to remember that not everyone is as keen on recycling as us, and the blue bin system has greatly reduced the amount of materials Hull sends to landfill.

Many thanks to Doug Sharp and Paul for organising this visit.

Hilary Byers



WILDLIFE NOTES

To bee or not to bee?

I know but what can you do? Nothing is one answer, sloth is a virtue. Let the grass grow and, unless the lawn is of bowling-green standard, nectar rich flowers will soon appear.

If you grow vegetables and have the space, let some of them go to seed (you may be surprised by the scent). You could try a carrot or beetroot in the flower patch, rocket is a good one, along with the other garden plants. Choose ones with simple flowers and if in doubt the bees will tell which ones they prefer.

An alternative is to grow plants from seed. Packets of mixed wildflower seed are readily available, but more fun and even cheaper is collecting your own seed.

This needs some patience, a paper envelope and a pen. A bright sunny day in July/August walking along a country lane gathering a few seeds here and there, or down to earth a look round Sculcoates

Cemetery; you might find me there and you might even get a job to do.

Some seeds are easy to find, Red Champion and Ox-eye daisy, others are a bit more tricky. The cranesbills like to throw them away as soon as they're ripe and others just blow away. Damp weather shuts things down.

Once you've got the seeds I prefer to start them off in pots or modules; sowing directly into rough grassland rarely succeeds. You could try walking on stilts in wet weather and grunting by the light of the full moon. It probably won't help but the neighbours will have something to talk about.

You can buy established plants but, whichever way you try, the aim is to match the plant to the growing conditions. Here a walk around a wild area will help. What grows in the shade, full sun or on barren ground. Low soil fertility helps by weakening the vigour of the dominant plants; you can help this by cutting and removing the vegetation in Autumn but leaving some cover for Spring.

This is just the start, a single step, in the process of creating a nectar rich habitat for bees and other pollinating insects.

David Longthorn

PS A recent cut in the grass-cutting regimen in Hull (due to cost-cutting?) has been a bonus for the pollinating insects. See opening paragraph. It's an ill wind that does no one any good!

Weather and wildlife

Yvette Grindley of Pickering Road Community Orchard tells us:

This year is a disaster for orchards

The warm weather in March caused the Queen Bees to lay thousands of eggs. By the time the eggs had hatched the weather had turned for the worse and they had to eat their own honey to stay alive.

The bad weather meant the bees couldn't leave the hive and hey presto, the worst crop of apples for 50 years. According to one grower, bees only need a couple of hours to pollinate the flowers

but even that was denied them this year! It's just incredible. The whole of Europe is affected, not just the UK, which means higher prices in the shops.

However, the early varieties might be OK. Our George Cave are perfectly healthy but the Beauty of Bath are non-existent and they crop 2 weeks earlier. The Bramleys are putting on a small crop as are the Christmas Pearmaine. We'll just have to wait and see what happens. Fingers crossed for good weather soon.

Shan Oakes has news from Swift Conservation:

Are our Swifts leaving a full month before they should be heading south?

It seems to be so. The Spurn Bird Observatory has been pondering the large numbers of Swifts passing through

on their way south. On 1st July 3000 were counted, with totals of 4000 and almost 7000 on the preceding days, making this a most unseasonal movement.

This matches up with reports from Swift enthusiasts across the UK; lower numbers, failed breeding, loss of familiar colonies, and lots of e-mails asking "Where are my Swifts?"

If climate change is taking the form of wetter, cooler summers for the UK, will our Swifts desert us for hotter climates? We know that increased temperatures have not affected Swift arrival dates, but colder weather, with a dearth of flying insect food, cannot but have a terminal effect on them.

Better news is that **Swift Conservation** has been successful in persuading developers all over Europe to accommodate nesting spaces for swifts into new and refurbished buildings.

See www.swift-conservation.org/news

Dr Eva Crane—International Bee Expert

When Eva Crane arrived as an assistant lecturer at the University College in Hull in 1936, it was as a nuclear physicist, but, on receiving a colony of bees in 1942, (it is said that this was a very practical wedding present!), she became fascinated and applied her analytical skills to studying all aspects of them.

She soon became an expert in everything concerning bees, from bee anatomy and health to the archaeological evidence of early people's hunting for wild honey and the practical aspects of beekeeping worldwide. Her home at 55



Richard Jones and Chris Coulson PHOTO: Hilary Byers

Newland Park, Hull, became a clearing house for bee information from all around the world, and from here she founded the International Bee Research Association of which she was the Director for 35 years. She edited the publications *Bee World* and *The Journal of Apiary Research*, and wrote an amazing 312 articles and books, including seminal works 'Bees and Beekeeping—Science, Practice and World Resources' (1991), and the 'World History of Beekeeping and Honey Hunting' (1999).

Her researches, teaching and work as an adviser to governments and NGOs took her to over 60 countries, and she recorded

her experiences in 'Making a Beeline' (2003). Her outstanding contribution to knowledge and practice earned her an OBE in 1986. She died in 2007 aged 95.

So it was very appropriate that on 12 June 2012, the centenary of her birth, a blue plaque was unveiled to the memory of Dr Crane on her former home at 55 Newland Park by Richard Jones, the Chairman of the Eva Crane Trust and Chris Coulson, Chairman of Beverley Beekeepers Association, in the company of leading members of the Beverley, Yorkshire, and British Beekeepers' Associations, Bee Craft and local Councillors.

The original purpose of the International Bee Research Association was "working to increase awareness of the vital role of bees in the environment". So I feel sure Eva would have shared the concerns of organisations including Friends of the Earth about the present apparent decline in bee populations, would have thoroughly researched the causes, and would probably have supported our campaign to draw the attention of government and others to the implications.

Hilary Byers



Monsanto buys out bee study firm

Monsanto has bought out one of the major international firms devoted to studying and protecting bees. This means the gene-manipulating giant will now be able to control the flow of information and products coming from Beeologics for colony collapse disorder (CCD).

Since 2007, Beeologics has been studying CCD, as well as Israeli Acute Paralysis Virus (IAPV). Now that Beeologics is owned and controlled by Monsanto, it seems expected that Beeologics will come up with "scientific breakthroughs" that deny any link between CCD and GMO technologies, and instead blame mystery pathogens and other factors that require more chemicals to eliminate.

Beeologics' acquisition announcement explains that Monsanto plans to incorporate all the biological research that

Beeologics has conducted over the years into its own programs for developing more GMO systems. Monsanto has also seized control of a key product that is currently in the Beeologics development pipeline that supposedly "help[s] protect bee health."

Several recent studies have definitively linked crop pesticides and herbicides, as well as high fructose corn syrup, to CCD. It appears as though Monsanto plans to use even more chemical inputs to supposedly solve the bee collapse problem.

Unless drastic action is taken to stop Monsanto in its continued quest to dominate global agriculture, the food supply as we know it will soon be a thing of the past.

Steve Dales

SOURCES FOR THIS ARTICLE INCLUDE:

http://www.beeologics.com/breaking_news.asp

<http://www.activistpost.com>

http://www.naturalnews.com/035688_Monsanto_honey_bees_colony_collapse.html#ixzz1uJaSMQN8

sky ride

Skyride Hull takes place on Sunday 19 August in Hull City Centre, Old Town, the Marina and The Deep.

Skyride is a joint venture by British Cycling and Sky to get people into cycling. It is for families and anyone who needs a bit of inspiration to get their bike out of the shed again, whatever your age, and whatever you ride.

Experience a traffic-free bike ride around Hull's city centre streets, the historic Old Town, the Marina and The Deep.

Roads will be closed to traffic from 10am onwards. It's free. There's no official start point or start time, and you can ride as much or as little of the route as you like, and stop as many times as you want.

Most people join in at one of the activation points along the route near the City Hall, Queen's Gardens and the Fruit Market, where you'll also find plenty of fun things to do whether you're on a bike or not.

www.goskyride.com/HullSkyRide



Hull Friends of the Earth

M E M B E R S H I P

I wish to become a member of Hull FoE <input type="checkbox"/> I wish to renew my Hull FoE membership <input type="checkbox"/> I wish to subscribe to the newsletter only <input type="checkbox"/>		PAYMENT Please note: subs are due by 1 April each year	
Name (Mr/Mrs/Ms)		I enclose:	
Address		Membership or subscription fee (£5 waged, £2 unwaged)	£
		Donation	£
Postcode		Total	£
Telephone		<i>Please make cheques payable to Hull Friends of the Earth</i>	
Email			

STANDING ORDER MANDATE

Hull Friends of the Earth

Standing Order Mandate

OR (*delete one or the other as appropriate*)

Amendment cancelling any previous instructions to pay money to Hull Friends of the Earth

(*Please fill in the details of your own account and the bank where it is held.*)

Your account name	
Your account number	
Your bank	
Bank branch	
Bank address	
Bank postcode	

Upon receipt of this order and then every year following on or about the _____ day of _____ (month) until otherwise instructed, please pay to

Hull Friends of the Earth, Yorkshire Bank plc, 38 Prince's Avenue, Hull HU5 3QQ

Account number: 27534801 **Branch sort code:** 05 05 25

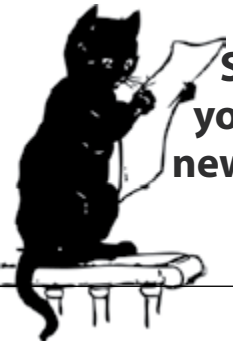
the sum of TWO POUNDS (unwaged) or FIVE POUNDS (waged)

or _____ (*delete and/or fill in as required - donations over the minimum amount are welcome*) mentioning the reference _____ (*your own name or something short we can identify you by on the bank statements!*)

Signed _____

Date _____

Please return to the Membership Secretary, Sue Jolliffe, 47 Kingsway, Cottingham, HU16 5BB



**Share
your
news?**

Hull ECO welcomes news and views of all things environmental in Hull and East Yorkshire. **Deadlines are the first Tuesday in January, April, July, October.**

Please send to **Hilary (details below)**

**Offers of help to
deliver newsletters
in your area are
very welcome!**

We will use the contact details you have provided to keep you up to date on our campaigns and how you can help us. If you'd rather NOT receive this information from us, please tick here

HULL FRIENDS OF THE EARTH - CONTACTS

Coordinator	Sue Jolliffe, 47 Kingsway, Cottingham HU16 5BB	Tel: (01482) 845958	Email: sue@jolliffe.karoo.co.uk
Newsletter	Hilary Byers, 170 Victoria Avenue, Hull HU5 3DY	Tel: (01482) 445747	Email: hilary@amskaya.karoo.co.uk
Web	www.hfoe.org.uk		Email: jolliffe@jolliffe.karoo.co.uk